

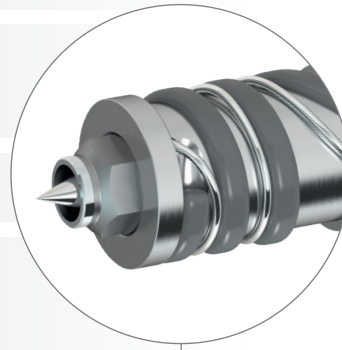


pro **MATRIX**

Standardised Hot Halves

Complete. Fast. Process reliable.

- + Perfect process control
- + Optimum temperature control right to the tip
- + Flexibly configurable
- + Natural full balancing with HPS III-TE manifold technology
- + High ease of maintenance and high durability
- + Fully integrated hot runner system. Wiring according to customer specification. Comprehensive documentation. CE-compliant.



pro **MATRIX**

Complete. Fast. Process reliable.

The standardised multi-cavity hot halves of the pro MATRIX series are designed on the basis of 4-cavity clusters, with pitch dimensions that can be individually defined within specified limits. The design and production-optimised layout enables particularly fast project lead times with high cost efficiency. Proven technical components guarantee a high level of process reliability. For demanding applications, further customisation to meet specific requirements is possible with additional technology options.



Available versions:

16-drop

32-drop

64-drop

Extended warranty and increased efficiency with precise control technology

EWIKON offers an extended warranty of 3 years, if your hot half is purchased with the matching pro CONTROL control technology. This enables reliable and precise control of your hot runner system with extremely convenient operation. The fast control behaviour makes pro CONTROL the first choice for demanding multi-cavity applications. Integrated interfaces for optimum communication with the injection moulding machine as well as extensive support and error detection functions complete the equipment.

pro CONTROL

OPC UA



Customised to your requirements



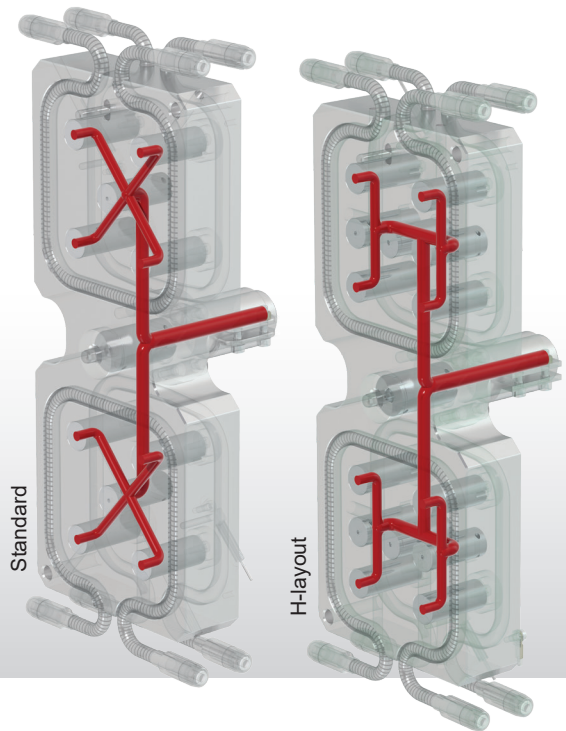
Increased process reliability

Valve gate with single drives

- Drive pistons integrated in the clamping plate.
- Pneumatic actuation.
- High-precision sealing elements with sealing cone directly at the melt channel. Practically gap-free sealing.
- Valve pin replacement in closed mould possible.

Synchronous plate valve gate

- Absolutely synchronous valve pin actuation.
- Uniform cavity filling with maximum repeatability.
- Ideal for the production of articles with small shot weights.
- Pneumatic synchronous plate actuation via pistons in the clamping plate.
- Overload safety device to protect the valve pins as an additional option.



Simplified maintenance

Nozzles for front installation

- Easy maintenance or replacement due to easy access to the nozzle after removal of the contour plate.

Optimised colour changes

HPS III-T manifold technology

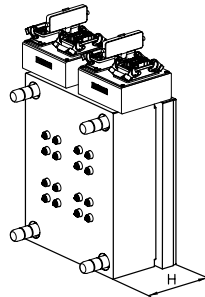
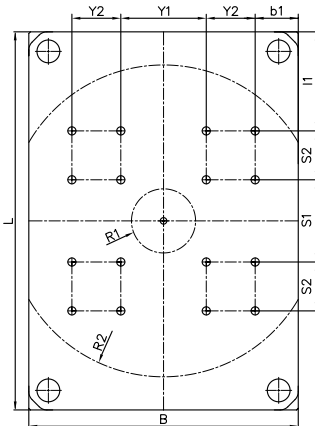
- EWIKON element technology. Streamlined flow channels without sharp corners.
- Smooth melt flow for sensitive materials and particularly quick colour changes.

Flow channels in H-layout

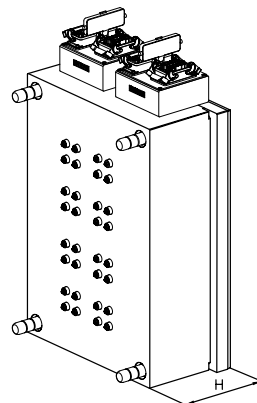
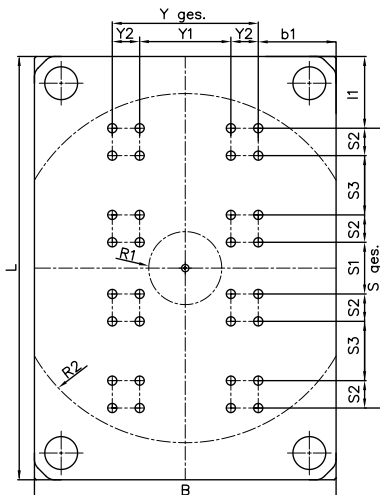
- Further improved balance (please contact EWIKON).

pro MATRIX	Standard	Option
Gating options	Open gating / Valve gating	–
Manifold technology		
Manifold system	HPS III-TE (X-layout)	HPS III-T (X-layout)
		HPS III-T (H-layout)
Nozzle technology		
Flow channel diameter	4.5 mm / 6 mm	–
Nozzle lengths	Standard nozzle lengths according to EWIKON main catalogue	Custom lengths available
Nozzle installation	Standard installation	Front installation
Tip versions	Open: W4, 2-hole torpedo TZM Valve pin: D6 / D7	–
Valve gate technology		
Drive	Single drive units in clamping plate, pneumatic actuation	Overload safety device for synchronous plate
	Synchronous plate, pneumatic actuation	
Exchange inserts / wear protection	–	Gate exchange inserts with gate contour
Mould design		
Mould plate quality	1.2312	1.2085
Guide elements	EWIKON standard	Other guide systems on request
Wiring		
Plug version and pin assignment	According to customer requirements	–
Cooling connections	DME / Festo / Hasco / Stäubli	–

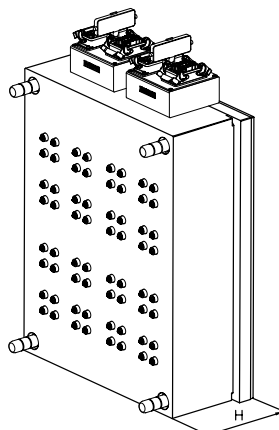
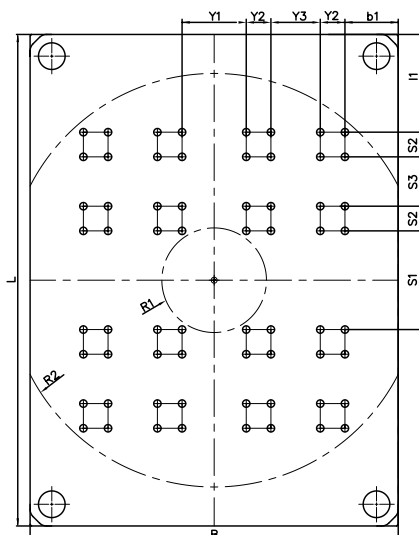
16-drop



32-drop



64-drop



EWIKON Heißkanalsysteme GmbH
Siegener Straße 35 • 35066 Frankenberg
Tel: +49 6451 501-0 • E-Mail: info@ewikon.com
www.ewikon.com

Technical information subject to alteration. | EWIKON 05/2026 EN

